

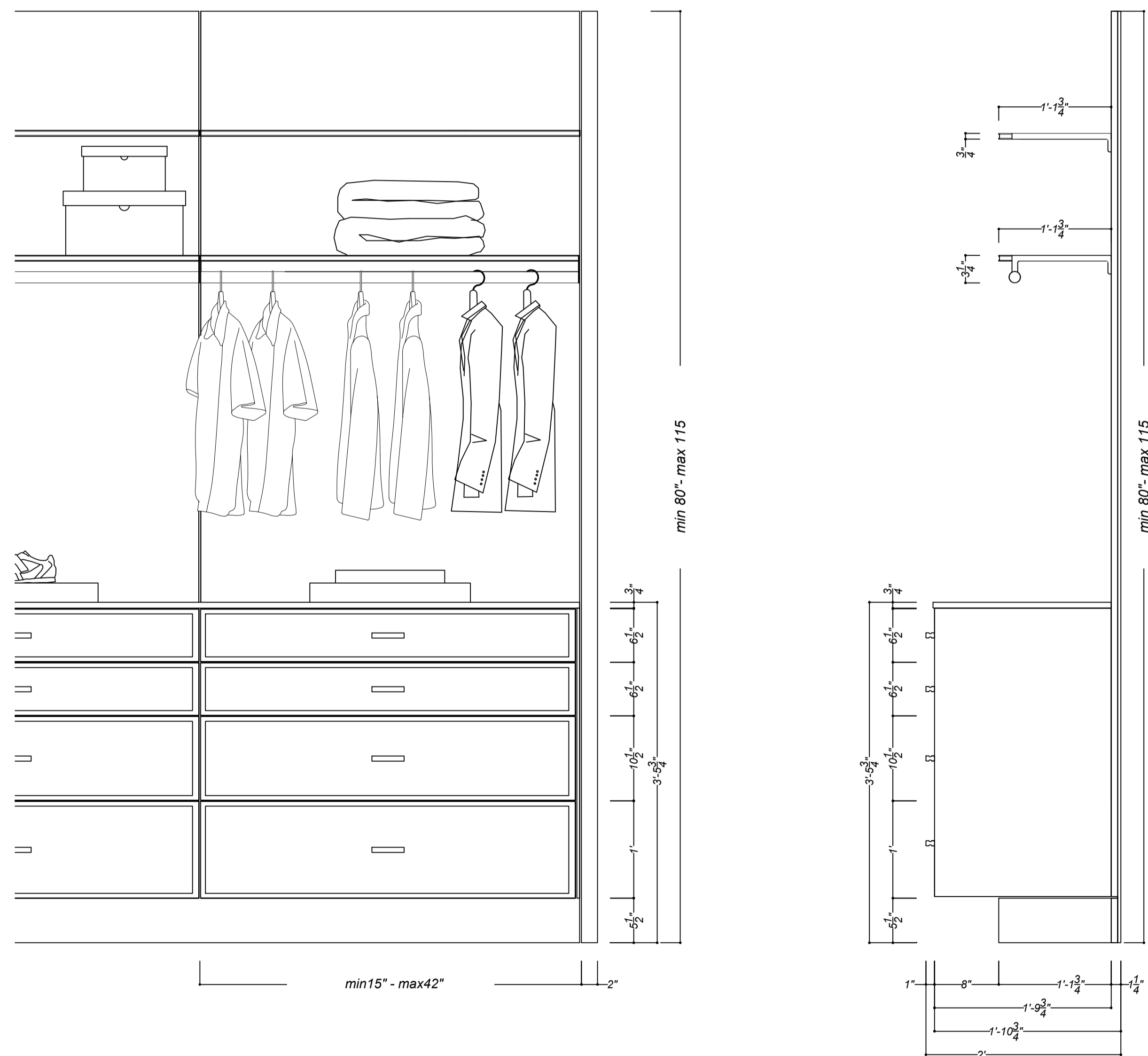
LuminaVesta

Critical Measurements and Installation Guidelines Upright Support System

Anchoring:	Uprights are anchored to the wall, requiring 1/2" plywood backing, secured to the studs and resting on the floor to offload vertical stress from the studs.
Wall Preparation:	Plywood backing should be installed prior to sheetrock, ensuring uprights can be securely attached through both sheetrock and plywood.
Fasteners:	Use screws that are at least 1/4" longer than the combined thickness of the plywood and sheetrock to ensure a secure fit.
Back Panels Connection:	Attached to the uprights via mechanical clips for easy assembly and disassembly, providing flexibility in design and use.

Accessories Installation

Components:	Shelves, hanging rods, and base drawers are affixed to the uprights using metal brackets for a sturdy and reliable setup.
Alignment:	Installation must be perfectly level for optimal functionality. Uprights should be aligned consistently based on hole perforations to accommodate brackets correctly. <i>Installation Tips</i>
Blocking Requirement:	Ensure the wall has the necessary blocking in place before installation. The blocking supports the uprights and distributes the load evenly across the wall.
Leveling:	Use a high-quality level during installation to ensure all components are perfectly horizontal or vertical, as required.
Directionality:	Pay attention to the orientation of the uprights. They must be installed in the correct direction (up or down) to match the perforations with the brackets.



For additional assistance or inquiries about the LuminaVesta wardrobe system, please contact our support team at www.ldlicf.com

As you peruse our Customizable Casework System, please keep in mind that while we offer extensive flexibility to tailor our products to your specific needs, there are inherent limitations within the system, particularly regarding hardware. The sizes and types of hardware available, though varied, may impact the final modularity and design possibilities of your selected casework. We have carefully selected a range of high-quality hardware to complement our diverse designs while ensuring functionality and aesthetic coherence. It is crucial for our customers to understand and accept that these hardware constraints are an integral part of the customization process. Our team is dedicated to working closely with you to navigate these limitations and find the best solutions to meet your requirements. Your satisfaction and the excellence of our products remain our top priorities.